



1388 Sutter Street, Suite 920
 San Francisco, CA 94109
 (800) 488-7274 Toll Free USA
 (415) 292-5400
 (415) 292-5410 Fax
www.trashmanage.com

Wilkinson™ Construction Debris Chute

THESE HEAVY-DUTY EXTERIOR CHUTES, IN 24"Ø OR 30"Ø STANDARD SIZES, HAVE OPEN INTAKE SECTIONS AT EACH LEVEL TO HANDLE DEBRIS AT HI RISE CONSTRUCTION SITES.

DESIGNED FOR REUSE ON FUTURE PROJECTS, EACH CHUTE CONSISTS OF ONE (1) INTAKE WITH ONE (1) MATING STRAIGHT SECTION TO ALLOW FOR VARIABLE STORY HEIGHTS UP TO A MAXIMUM LF 11'-8". ADDITIONAL 2'-0" OR 4'-0" SPOOL SECTIONS ARE AVAILABLE FOR LONGER STORY HEIGHTS OR BLANK FLOORS

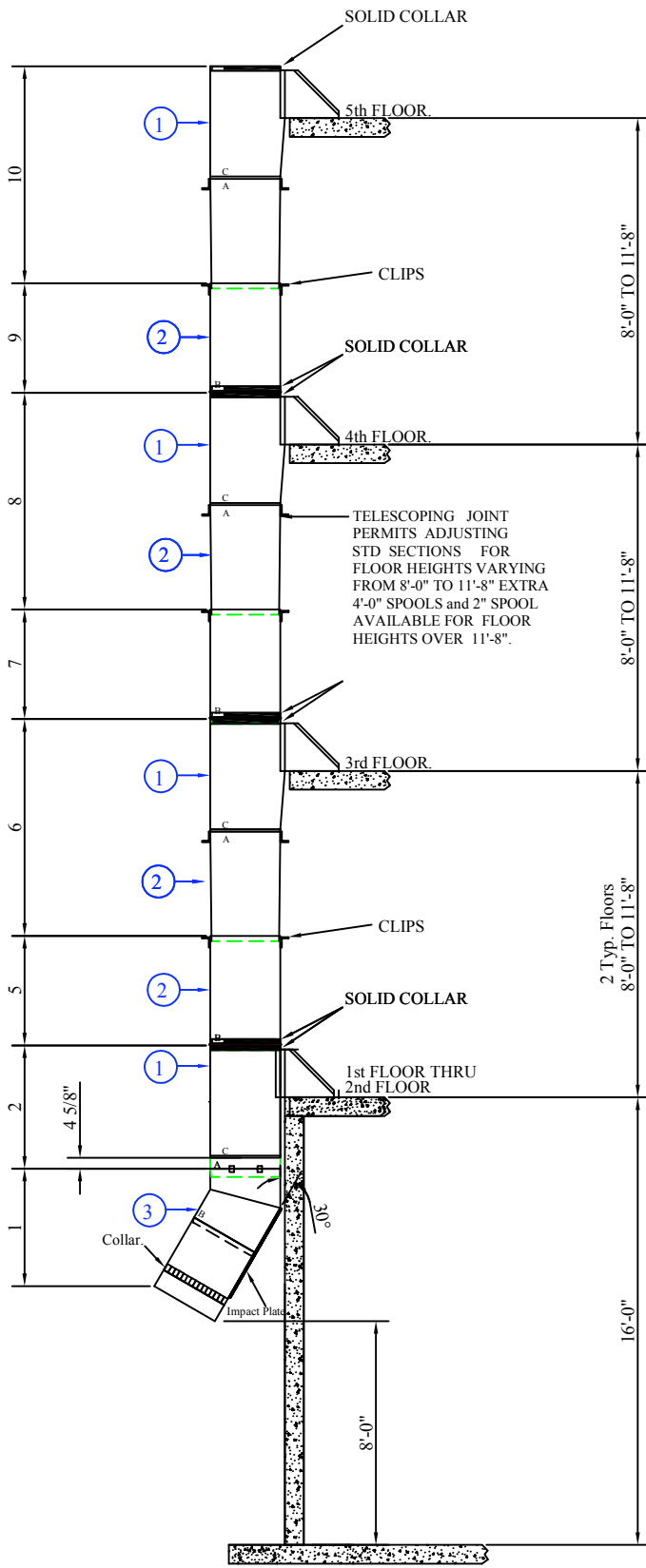
IMPORTANT FEATURES

- REUSABLE FROM PROJECT TO PROJECT
- ELIMINATES MAKESHIFT UNSAFE DESIGN FOR REMOVAL OF DEBRIS
- RAPID INSTALLATION & REMOVAL REDUCES HIDDEN COST OF DEBRIS REMOVAL

PRICE LIST

DESCRIPTION- DEBRIS CHUTE 13GA	WEIGHT	30 INCH	24 INCH
ONE FLOOR (ONE INTAKE-ONE 4'SECTION)	300 lbs/240 lbs	1,350.00	1,048.00
4' SECTION	120 lbs/96 lbs	438.00	338.00
2'SECTION	60 lbs/48 lbs	356.00	268.00
OFFSET	VARIABLES	1604.00	1604.00

DESCRIPTION- DEBRIS CHUTE 16GA	WEIGHT	30 INCH	24 INCH
ONE FLOOR (ONE INTAKE-ONE 4'SECTION)	300 lbs	500.00	N/A
4' SECTION	120 lbs	180.00	N/A
2'SECTION	60 lbs	70.00	N/A
OFFSET	VARIABLES	1604.00	N/A



	ALL NUMBERED ITEMS TO BE FURNISHED		QUANTITY
		30 DIA Chute to be fabricated of 13 Ga. Material Type: GALVANNEAL	
16S32D	1	INTAKES DEBRIS CHUTE. (W/Solid Collar) Material Type: 13 gauge GALVANNEAL.	
16432D	2	48" Pipe. (W/Solid Collar) Material Type: 13 gauge GALVANNEAL.	
164120	3	IMPACT OFFSET - (OPTIONAL). Material Type: 13 gauge GALVANNEAL.	

DESCRIPTION	REV.	DATE	INIT.

THIS DRAWING IS THE PROPERTY OF WILKINSON-HI-RISE, LLC.
 IT IS LOANED ON THE CONDITION THAT IT IS NOT TO BE REPRODUCED, COPIED OR OTHERWISE DISPOSED OF, AND IS NOT TO BE USED IN PART TO FURNISH INFORMATION FOR THE MAKING OF DRAWINGS, PRINTS, OR PARTS THEREOF. THE ACCEPTANCE OF THIS DRAWING IS AN ACCEPTANCE OF THE FOREGOING CONDITIONS AND THE RECOGNITION OF THE EXCLUSIVE OWNERSHIP IN AND TO THE DRAWINGS AS THE PROPERTY OF WILKINSON-HI-RISE, LLC.



WILKINSON-HI-RISE, LLC.

CUSTOMER:

DWG.

SCALE NTS

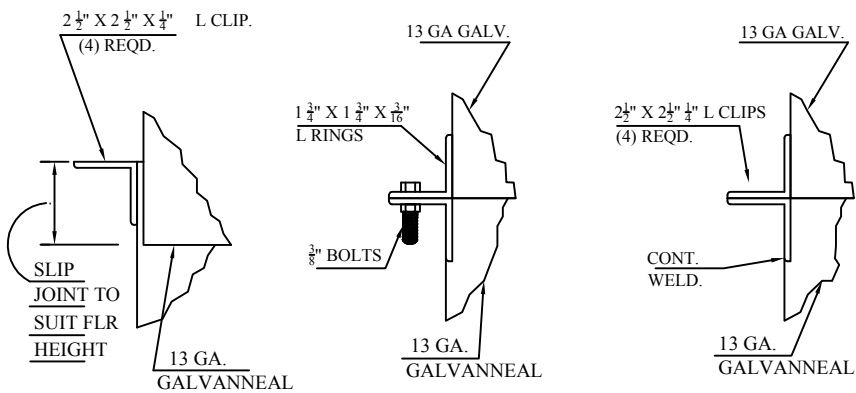
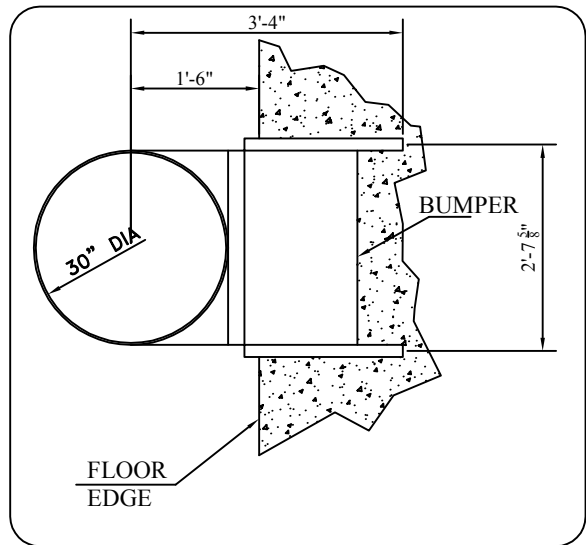
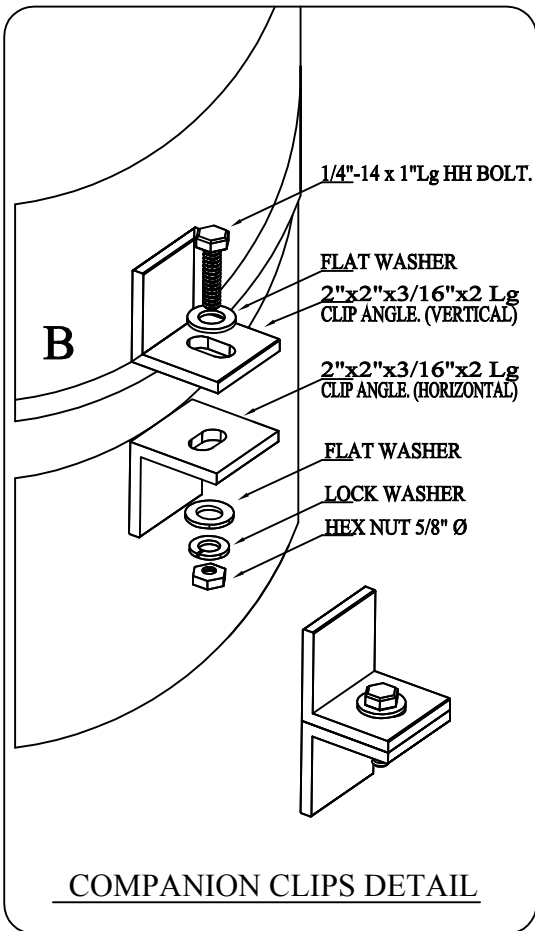
SHEET 1 OF 2

DEBRIS CHUTE 30 Ø

JOB:

ADDRESS:

JOB #



FIELD NOTE

ENCLOSING WALLS AROUND CHUTES ARE NOT TO BE ERECTED UNTIL AFTER CHUTE IS INSTALLED

NOTE

CONTRACTOR TO VERIFY AND APPROVE ALL DIMENSIONS ON THIS DRAWING WITH CONDITIONS AT THE JOB SITE. WILKINSON RESPONSIBLE FOR DEVIATIONS FROM THIS DRAWING ONCE APPROVED

THIS DRAWING IS THE PROPERTY OF WILKINSON HI-RISE LLC.
IT IS LOANED ON THE CONDITION THAT IT IS NOT TO BE REPRODUCED, COPIED OR OTHERWISE DISPOSED OF, AND IS NOT TO BE USED IN PART TO FURNISH INFORMATION FOR THE MAKING OF DRAWINGS, PRINTS, OR PARTS THEREOF. THE ACCEPTANCE OF THIS DRAWING IS AN ACCEPTANCE OF THE FOREGOING CONDITIONS AND THE RECOGNITION OF THE EXCLUSIVE OWNERSHIP IN AND TO THE DRAWINGS AS THE PROPERTY OF WILKINSON HI-RISE, LLC.



WILKINSON-HI-RISE, LLC.

CUSTOMER:

DWG.

SCALE NTS

SHEET 2 OF 2

DEBRIS CHUTE DETAILED SPECIFICATIONS

JOB

ADDRESS:

JOB #